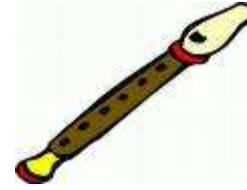


常用指法表

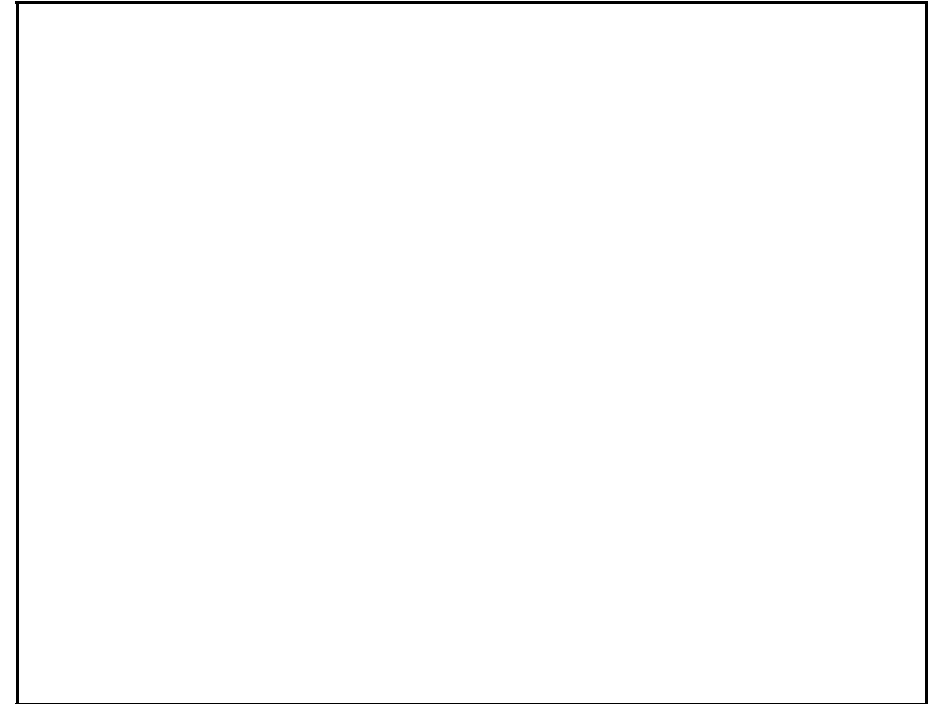
The image displays a '常用指法表' (Common Fingering Chart) for a recorder. It consists of two rows of musical notation and corresponding recorder diagrams. The first row shows notes C, D, E, F, F#, G, A, and Bb on a treble clef staff. Below each note is a diagram of a recorder with dots indicating finger placement on the left and right sides. The second row shows notes B, C', D', E', F', F#, and G' on a treble clef staff. Below each note is a similar recorder diagram with finger placement indicators.

獻主會溥仁小學 音樂課程組 編  
2018年1月3版

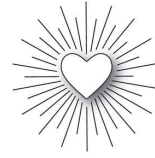


獻主會溥仁小學

牧童笛教材二



姓名: \_\_\_\_\_ 班別: \_\_\_\_\_ ( )



# 播種仁愛

(This little light of mine)





# 法地瑪聖母



2

D G G B D' D' B D' D' B

5

A \_ B C' \_ A \_ \_ \_ \_ \_

9

\_ \_ \_ B \_ \_ \_ A \_ \_

13

\_ \_ \_ \_ \_ \_ \_ \_ \_

17

\_ \_ \_ \_ \_



## 目錄

考考你.....P.1

Go Tell Aunt Rhody.....P.2

D 音.....P.3

歡樂頌主題.....P.4

E 音.....P.5

Old McDonald.....P.6

這是什麼?.....P.7

快樂的囉嗦.....P.8

**F#** 音.....P.9

馬車伏之歌.....P.10

法地瑪聖母.....P.11

播種仁愛..... P.12

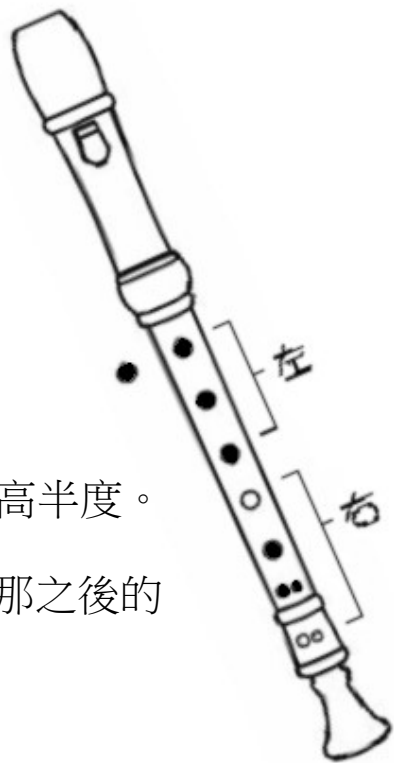
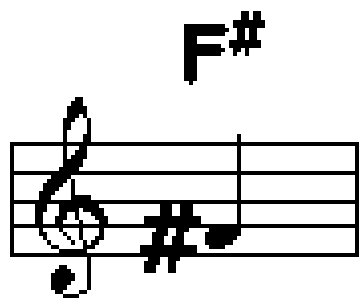
考考你~還記得這些是什麼音嗎?(G/A/B/C'/D')

在\_\_上寫上答案。



# 馬車伏之歌

新疆民歌



#是升號，意思是比 F 音高半度。

它可以寫在 譜開頭，那之後的

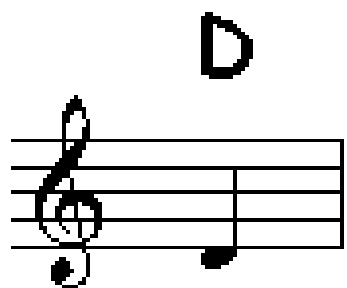
F 音都是 F#了!

Musical notation for a melody in 4/4 time. The key signature has one sharp (F#). The notes are G, D, G, D, E, F#, E, D. The F# note is circled in red. Below the staff are the letter names: G D G D E F# E D. A 'V' symbol is at the end of the staff.

Musical notation for a second melody in 4/4 time. The key signature has one sharp (F#). The notes are G, D, —, —, E, —, —. The F# note is circled in red. Below the staff are the letter names: G D — — E — —. A 'V' symbol is at the end of the staff.

# Go Tell Aunt Rhody

Musical notation for the song 'Go Tell Aunt Rhody' in 4/4 time. The key signature has one sharp (F#). The notes are B, B, A, G, G, A, A, C', —, —, —, D', D', C', —, —. Below the staff are the letter names: B B A G G A A C' — — — D' D' C' — —. A 'V' symbol is at the end of the staff.



D

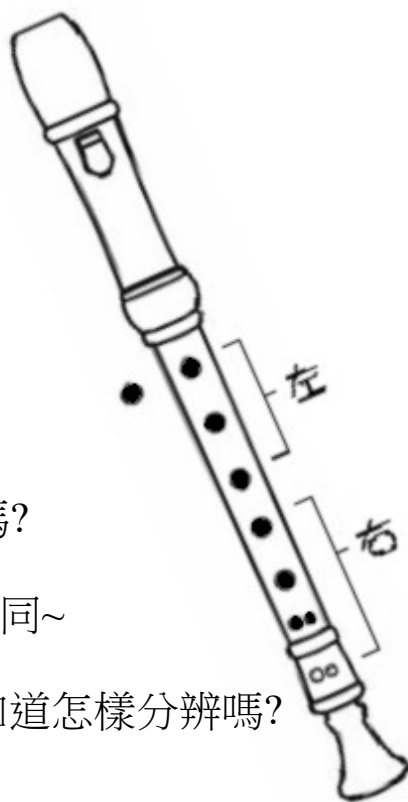


D'

還記得這個 嗎?

它們都是 D 音，但音高不同~

你知道哪個較高音嗎?你知道怎樣分辨嗎?



# 快樂的囉嗦

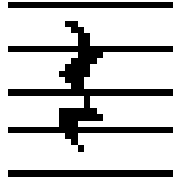
雲南民歌



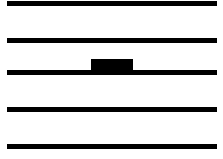
雲南的民族服



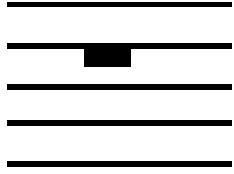
這是什麼?



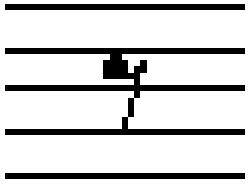
四分休止符  
(停一拍)



八分休止符  
(停半拍)



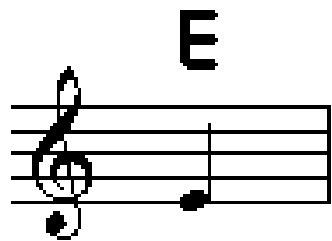
二分休止符  
(停兩拍)



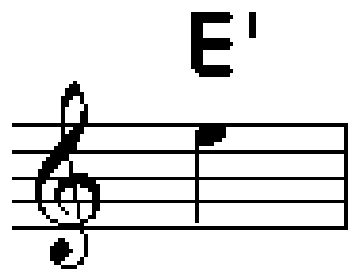
全休止符  
(停四拍)

### 歡樂頌主題(Ode to Joy)

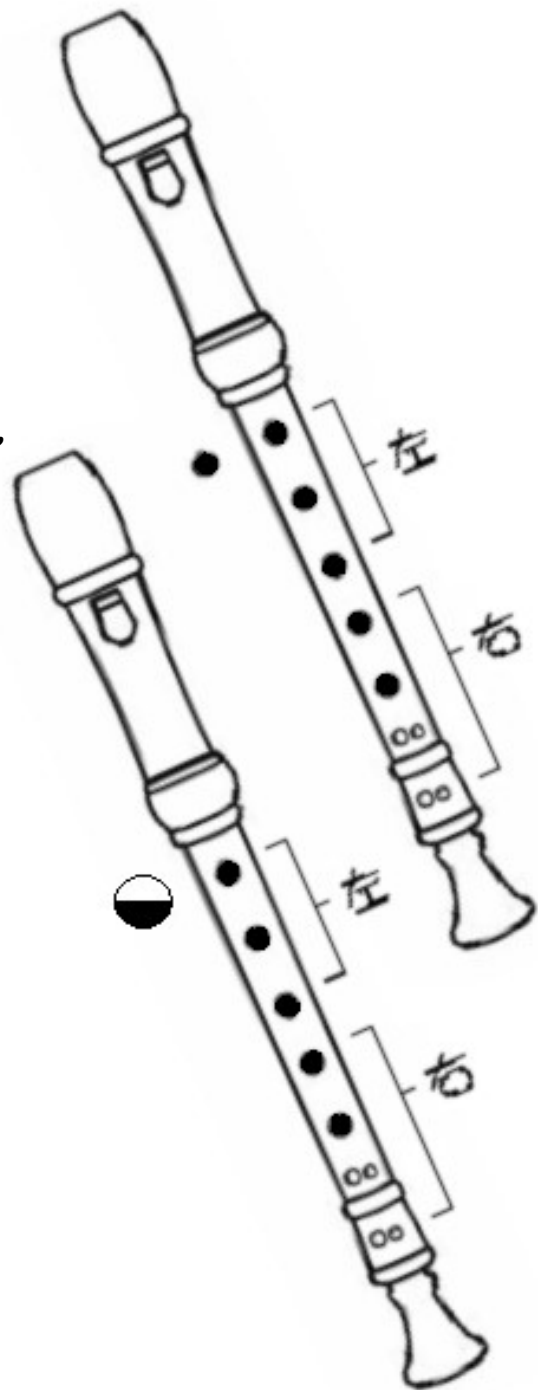
B B C' D' D' C' B A G G A B B A A A B G A B C' B G A B C' B A G A D



**E** 與 **E'** 也是音高不同~  
 要小心留意啊!  
 不過指法很相似。



試試吹奏吧!



Old McDonald

